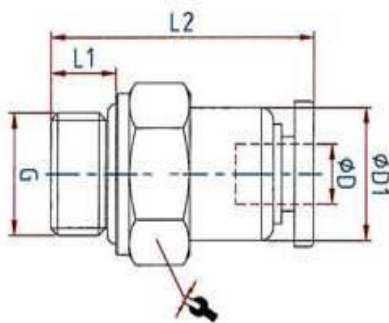
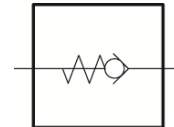


The non-return function of these push-in fittings prevents the air from flowing back; the unidirectional design means air flow is only possible in one direction.

These valves are available with air flow from the port to the tube or from the tube to the port.

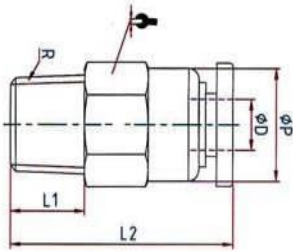
Min. opening pressure	0.2 bar
Material	Plastic and nickel-plated brass
Working pressure	0 - 10 bar
Temperature range	0 °C to 60 °C
Medium	Compressed air
Recommended hose	PU or PA (Nylon)



200.186-1

### Straight non-return valve, flow direction from port to tube, parallel male thread with O-ring (NBR)

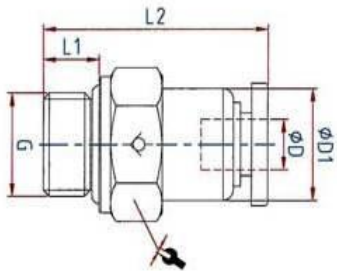
Art. No.	Type No.	Thread	For tube O.D. mm	L1 mm	L2 mm	a/f mm	Ø D1 mm	Sleeve	Standard thread
151587	200.54-1	M5	4	3.6	31.4	10	10.0	Plastic red	DIN 13-1
151587 = discontinued product. No longer available. New product 151490 (200.54-2)									
151351	200.186-1	G 1/8	6	6.0	32.5	12	11.9	Plastic red	DIN EN ISO 228-1
151351 = discontinued product. No longer available. New product 151351 (200.186-1)									
151352	200.148-1	G 1/4	8	7.0	36.9	15	14.0	Plastic red	DIN EN ISO 228-1
151352 = discontinued product. No longer available. New product 151495 (200.148-2)									



202.184-1

**Straight non-return valve, flow direction from port to tube, conical male thread, coated**

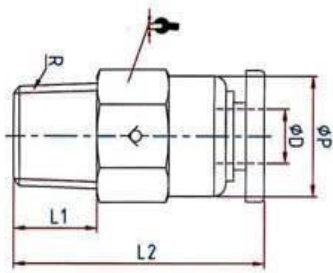
Art. No.	Type No.	Thread	For tube O.D. mm	L1 mm	L2 mm	a/f mm	Ø P mm	Sleeve	Standard thread
151353	202.184-1	R 1/8	4	8.0	27.3	10	10.0	Plastic red	ISO 7-1
151353 = discontinued product. No longer available. New product 151500 (202.184-2)									
151354	202.186-1	R 1/8	6	8.0	32.5	12	11.9	Plastic blue	ISO 7-1
151354 = discontinued product. No longer available. New product 151501 (202.186-2)									



201.186-1

**Straight non-return valve, flow direction from tube to port, parallel male thread with O-ring (NBR)**

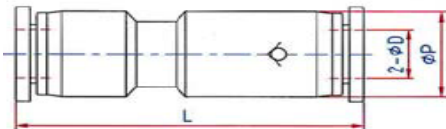
Art. No.	Type No.	Thread	For tube O.D mm	L1 mm	L2 mm	a/f mm	Ø D1 mm	Sleeve	Standard thread
151355	201.186-1	G 1/8	6	6.0	32.5	12	11.9	Plastic blue	DIN EN ISO 228-1
151355 = discontinued product. No longer available. New product 151511 (201.186-2)									
151356	201.188-1	G 1/8	8	6.0	34.8	14	14.0	Plastic blue	DIN EN ISO 228-1
151356 = discontinued product. No longer available. New product 151512 (201.188-2)									
151357	201.146-1	G 1/4	6	7.0	32.5	15	11.9	Plastic blue	DIN EN ISO 228-1
151357 = discontinued product. No longer available. New product 151513 (201.146-2)									
151358	201.148-1	G 1/4	8	7.0	36.9	15	14.0	Plastic blue	DIN EN ISO 228-1
151358 = discontinued product. No longer available. New product 151514 (201.148-2)									



203.148-1

**Straight non-return valve, flow direction from tube to port, conical male thread, coated**

Art. No.	Type No.	Thread	For tube O.D. mm	L1 mm	L2 mm	a/f mm	Ø P mm	Sleeve	Standard thread
151359	203.186-1	R 1/8	6	8.0	32.5	12	11.9	Plastic blue	ISO 7-1
151359 = discontinued product. No longer available. New product 151520 (203.186-2)									
151360	203.146-1	R 1/4	6	10.0	32.5	14	11.9	Plastic blue	ISO 7-1
151360 = discontinued product. No longer available. New product 151522 (203.146-2)									
151361	203.148-1	R 1/4	8	10.0	37.2	14	14.0	Plastic blue	ISO 7-1
151361 = discontinued product. No longer available. New product 151523 (203.148-2)									



204.04-1

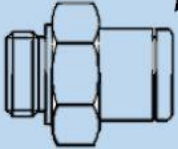


204.10-1


**Straight non-return valve with plug connection**

Art. No.	Type No.	For tube O.D. mm	L2 mm	Ø P mm	Material	Sleeve
151362	204.04-1	4	41.9	10.5	Plastic	Plastic blue
151362 = discontinued product. No longer available. New product 151528 (204.04-2)						
151363	204.06-1	6	47.4	12.5	Plastic	Plastic blue
151363 = discontinued product. No longer available. New product 151529 (204.06-2)						
151364	204.10-1	10	65.2	25.0	Plastic/aluminium	Plastic blue
151364 = discontinued product. No longer available. New product 151531 (204.10-2)						


We recommend for improved strength of push-in fittings with **PA** hoses, the following push-in fitting - hose combination:



For tube O.D.	Recommended hose $\varnothing$	Recommended hose
3	3x1.5 *	259.08 X
4	4x2 *	259.09 X
5	5x3	259.10 X
6	6x4 *	259.11 X
8	8x6 *	259.12 X
10	10x7 *	259.61 X
12	12x9 *	259.14 X
14	14x11	259.62 X
16	16x12	259.25 X

\* Recommended and based on ISO 14743

We recommend for improved strength of push-in fittings with **PU** hoses, the following push-in fitting - hose combination:



For tube O.D.	Recommended hose $\varnothing$	Recommended hose
3	3x1.5 *	259.50 X
4	4x2 *	259.04 X
5	5x3	259.15 X
6	6x4 *	259.16 X
8	8x5 *	259.63 X
10	10x7 *	259.64 X
12	12x8 *	259.65 X
14	14x10	259.51 X
16	16x12	259.52 X

\* Recommended and based on ISO 14743